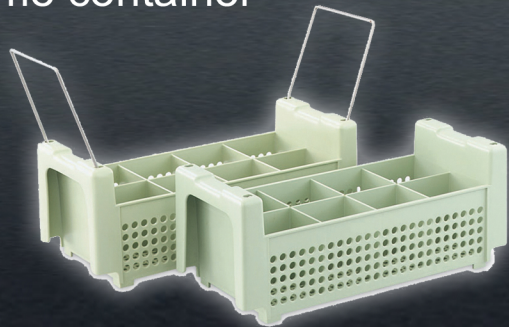


Washing

- Presoak immediately
- Use a reliable product
- Never presoak in aluminum
- Use a noncorrosive wash agent
- Use in UPRIGHT racks, NOT FLAT

Handling

- Use cutlery warewashing basket for easy handling
- Makes it possible to wash, transport, and dispense in the same container



Rinsing

- Use water at least 180°F
- Wetting agents prevent spotting
- Hard water should be softened

Storage

- Always store flatware with the eating side down.
- This aids in drying, helps prevent transfer rusting, and avoids hand contamination.

